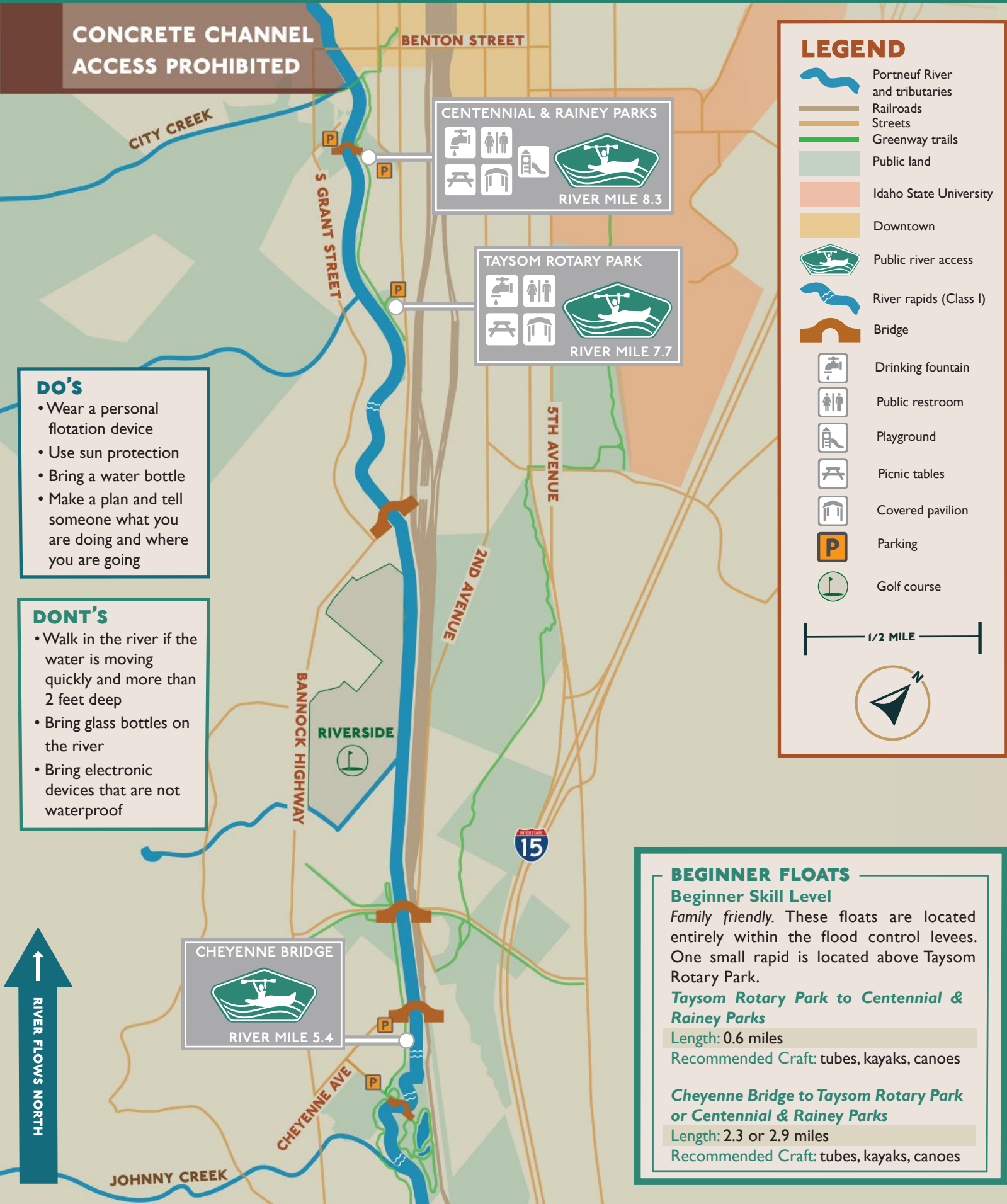


# PORTNEUF RIVER WATER TRAIL BEGINNER FLOATS



**CONCRETE CHANNEL  
ACCESS PROHIBITED**

## LEGEND

- Portneuf River and tributaries
- Railroads
- Streets
- Greenway trails
- Public land
- Idaho State University
- Downtown
- Public river access
- River rapids (Class I)
- Bridge
- Drinking fountain
- Public restroom
- Playground
- Picnic tables
- Covered pavilion
- Parking
- Golf course

1/2 MILE



### DO'S

- Wear a personal flotation device
- Use sun protection
- Bring a water bottle
- Make a plan and tell someone what you are doing and where you are going

### DONT'S

- Walk in the river if the water is moving quickly and more than 2 feet deep
- Bring glass bottles on the river
- Bring electronic devices that are not waterproof

CHEYENNE BRIDGE  
  
RIVER MILE 5.4

CENTENNIAL & RAINEY PARKS  
  
  
  
  
  
  
RIVER MILE 8.3

TAYSOM ROTARY PARK  
  
  
  
  
  
  
RIVER MILE 7.7

## BEGINNER FLOATS

### Beginner Skill Level

*Family friendly.* These floats are located entirely within the flood control levees. One small rapid is located above Taysom Rotary Park.

### Taysom Rotary Park to Centennial & Rainey Parks

Length: 0.6 miles  
Recommended Craft: tubes, kayaks, canoes

### Cheyenne Bridge to Taysom Rotary Park or Centennial & Rainey Parks

Length: 2.3 or 2.9 miles  
Recommended Craft: tubes, kayaks, canoes

↑  
RIVER FLOWS NORTH

# INTERMEDIATE FLOATS



## FLOW RATE

The size of rapids varies with river flow.

**Float at your own risk.**

River flow <i>Cubic feet per second</i>	Float rate <i>Miles per hour</i>
50	0.25 - 0.5
100	1.5 - 2.5
250	2.0 - 3.0

- Text "13075500" to [waternow@usgs.gov](mailto:waternow@usgs.gov) for real time data on river flow.
- Float time will be faster with a paddle.
- The river is slower downstream of Taysom Rotary Park.

## RESPECT PRIVATE PROPERTY

- The Portneuf River is open to the public, but much of the adjacent land is private property.
- You may only enter and exit the river from public land or at public rights of way next to bridges.



For more information visit:  
<https://river.pocatello.us>



## INTERMEDIATE FLOATS

### Intermediate Skill Level

*Maneuvering skills required.* These floats have numerous small rapids as well as low overhanging branches.

### Edson Fichter to Cheyenne Bridge

Length: 0.4 miles  
Recommended Craft: tubes, kayaks, canoes

### Portneuf Road to Edson Fichter

Length: 5.0 miles  
Recommended Craft: kayaks, canoes

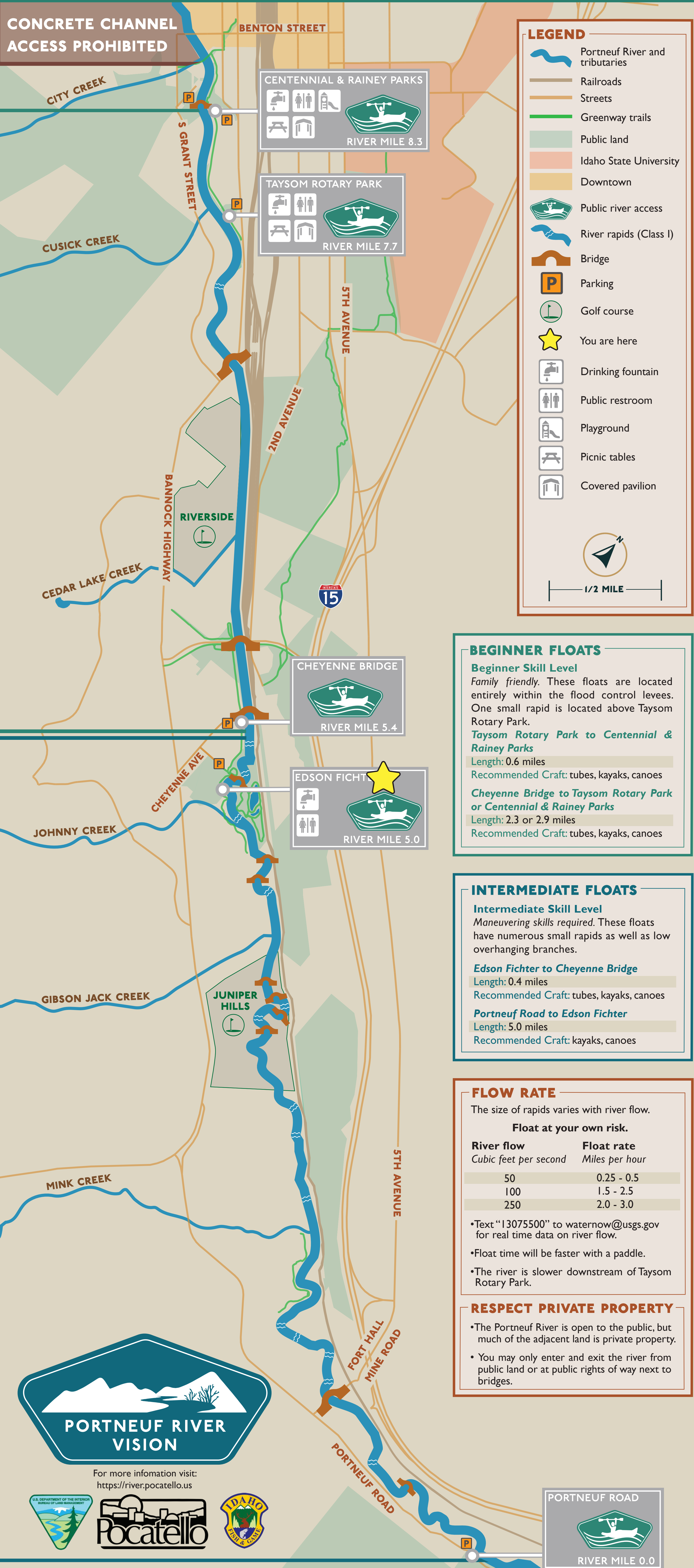
# PORTNEUF RIVER WATER TRAIL

CONCRETE CHANNEL ACCESS PROHIBITED

BEGINNER SKILL LEVEL

INTERMEDIATE SKILL LEVEL

← RIVER FLOWS NORTH



### LEGEND

- Portneuf River and tributaries
- Railroads
- Streets
- Greenway trails
- Public land
- Idaho State University
- Downtown
- Public river access
- River rapids (Class I)
- Bridge
- Parking
- Golf course
- You are here
- Drinking fountain
- Public restroom
- Playground
- Picnic tables
- Covered pavilion

1/2 MILE

### BEGINNER FLOATS

**Beginner Skill Level**  
*Family friendly.* These floats are located entirely within the flood control levees. One small rapid is located above Taysom Rotary Park.

**Taysom Rotary Park to Centennial & Rainey Parks**  
 Length: 0.6 miles  
 Recommended Craft: tubes, kayaks, canoes

**Cheyenne Bridge to Taysom Rotary Park or Centennial & Rainey Parks**  
 Length: 2.3 or 2.9 miles  
 Recommended Craft: tubes, kayaks, canoes

### INTERMEDIATE FLOATS

**Intermediate Skill Level**  
*Maneuvering skills required.* These floats have numerous small rapids as well as low overhanging branches.

**Edson Fichter to Cheyenne Bridge**  
 Length: 0.4 miles  
 Recommended Craft: tubes, kayaks, canoes

**Portneuf Road to Edson Fichter**  
 Length: 5.0 miles  
 Recommended Craft: kayaks, canoes

### FLOW RATE

The size of rapids varies with river flow.

**Float at your own risk.**

River flow Cubic feet per second	Float rate Miles per hour
50	0.25 - 0.5
100	1.5 - 2.5
250	2.0 - 3.0

- Text "13075500" to waternow@usgs.gov for real time data on river flow.
- Float time will be faster with a paddle.
- The river is slower downstream of Taysom Rotary Park.

### RESPECT PRIVATE PROPERTY

- The Portneuf River is open to the public, but much of the adjacent land is private property.
- You may only enter and exit the river from public land or at public rights of way next to bridges.



For more information visit:  
<https://river.pocatello.us>



PORTNEUF ROAD  
 RIVER MILE 0.0