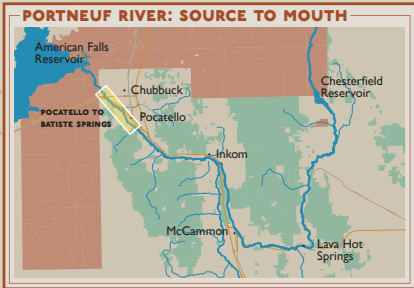
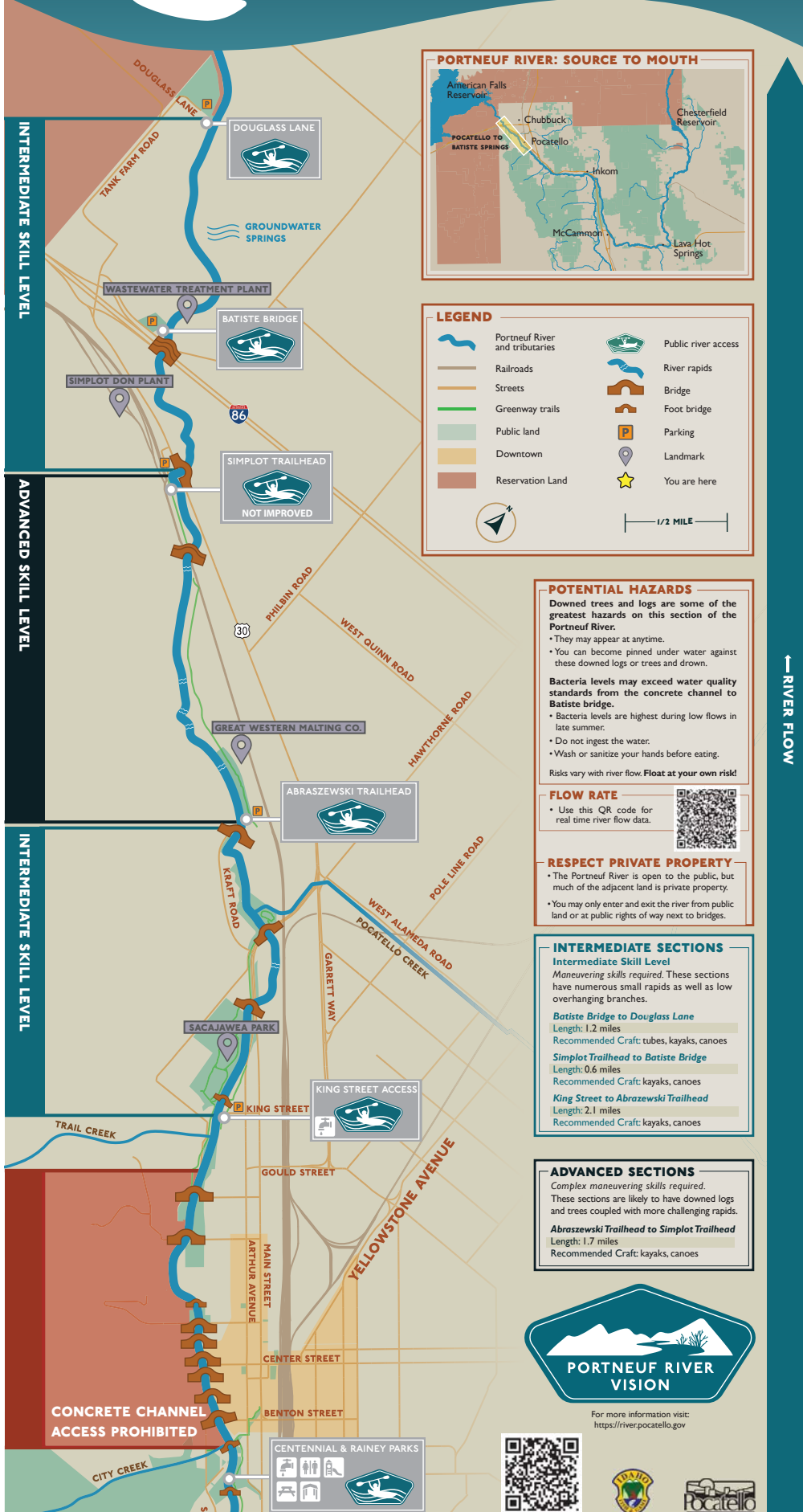


PORTNEUF RIVER WATER TRAIL

POCATELLO TO BATISTE SPRINGS



LEGEND

Portneuf River and tributaries	Public river access
Railroads	River rapids
Streets	Bridge
Greenway trails	Foot bridge
Public land	Parking
Downtown	Landmark
Reservation Land	You are here

POTENTIAL HAZARDS

Downed trees and logs are some of the greatest hazards on this section of the Portneuf River.

- They may appear at anytime.
- You can become pinned under water against these downed logs or trees and drown.

Bacteria levels may exceed water quality standards from the concrete channel to Batiste bridge.

- Bacteria levels are highest during low flows in late summer.
- Do not ingest the water.
- Wash or sanitize your hands before eating.

Risks vary with river flow. **Float at your own risk!**

FLOW RATE

- Use this QR code for real time river flow data.

RESPECT PRIVATE PROPERTY

- The Portneuf River is open to the public, but much of the adjacent land is private property.
- You may only enter and exit the river from public land or at public rights of way next to bridges.

INTERMEDIATE SECTIONS

Intermediate Skill Level
Maneuvering skills required. These sections have numerous small rapids as well as low overhanging branches.

Batiste Bridge to Douglass Lane
Length: 1.2 miles
Recommended Craft: tubes, kayaks, canoes

Simplot Trailhead to Batiste Bridge
Length: 0.6 miles
Recommended Craft: kayaks, canoes

King Street to Abraszewski Trailhead
Length: 2.1 miles
Recommended Craft: kayaks, canoes

ADVANCED SECTIONS

Complex maneuvering skills required. These sections are likely to have downed logs and trees coupled with more challenging rapids.

Abraszewski Trailhead to Simplot Trailhead
Length: 1.7 miles
Recommended Craft: kayaks, canoes



For more information visit:
<https://river.pocatello.gov>



2024

Floating Notes King Street -Batiste Bridge

Float contains numerous unmarked log jams. Use caution and expect to get out of craft at least 6 times, depending on flow rate.

Interactive Float Map

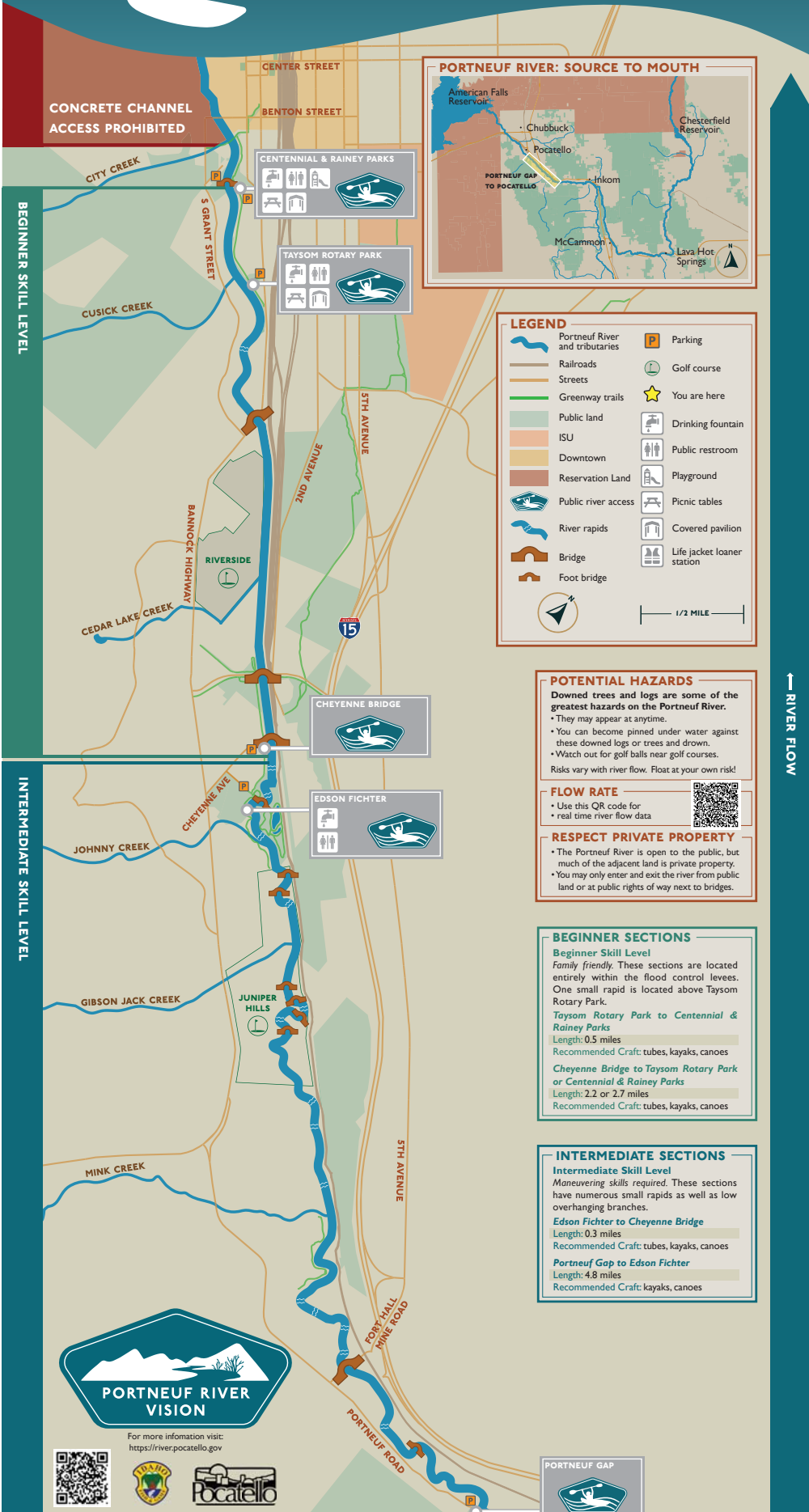


River Vision Website



PORTNEUF RIVER WATER TRAIL

PORTNEUF GAP TO POCATELLO



The size of rapids varies with river flow.

Float at your own risk.

50 cfs flow
0.25-0.5 mph flow rate

100 cfs flow
1.5-2.5 mph flow rate

250 cfs flow
2.0-3.0 mph flow rate

Float time will be faster with a paddle.

The river is slower downstream of Taysom Rotary Park and speeds up again downstream of the Abraszewski Trailhead.



For more information visit: <https://river.pocatello.gov>

